

# MONTHLY MEMBERSHIP PROGRESS REPORT

LOCATION MASSACHUSETTS

District 33 K

Results as of: 4/30/2022

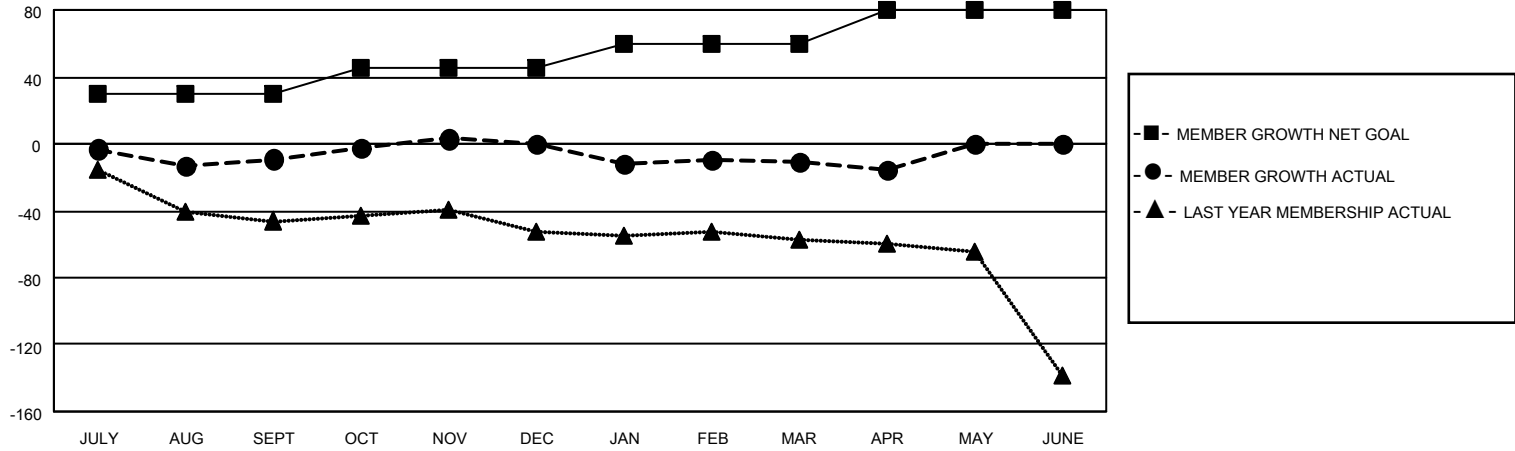
Clubs			
RESULTS FOR 2021-2022			
QUARTER	NEW CLUB GOAL	NEW CLUBS	DROPPED CLUBS
JULY/AUG/SEPT	0	0	0
OCT/NOV/DEC	1	0	0
JAN/FEB/MAR	0	0	0
APR/MAY/JUNE	0	0	0

Members			
RESULTS FOR 2021-2022			
QUARTER	MEMBER GROWTH NET GOAL	MEMBER GROWTH ACTUAL	DROPPED MEMBERS ACTUAL (including transfers)
JULY/AUG/SEPT	30	21	28
OCT/NOV/DEC	15	63	53
JAN/FEB/MAR	15	30	37
APR/MAY/JUNE	20	5	7

**GOALS AND ACTUAL NEW CLUBS CUMULATIVE**



**GOALS AND ACTUAL MEMBERS CUMULATIVE**



DROPPED CLUBS: 0	
<u>DROPPED MEMBERS</u>	
DECEASED	20
CLUB CANCELLED	0
OTHER	105
<b>TOTAL</b>	<b>125</b>

29 CLUBS OF 47 ADDED 1 OR MORE NEW MEMBERS

[CLICK HERE FOR CUMULATIVE MEMBERSHIP DATA](#)

<u>GENDER DISTRIBUTION</u>	
MALE	1,031 (64.36%)
FEMALE	570 (35.58%)
NON BINARY	0 (0.00%)
PREFER NOT TO ANSWER	1 (0.06%)
TOTAL FAMILY UNIT MEMBERS	
	197
FAMILY MEMBERS PAYING HALF DUES	
	99